



## Admin Kit User's Guide

<b>DOWNLOAD AND INSTALL ADMIN KIT .....</b>	<b>2</b>
<b>MYUSBONLY CLIENT SETTING.....</b>	<b>3</b>
<b>SETUP PASSWORD FOR ADMIN KIT.....</b>	<b>3</b>
<b>REGISTER YOUR ADMIN KIT .....</b>	<b>4</b>
<b>MODIFY CLIENT PASSWORD FROM ADMIN KIT .....</b>	<b>5</b>
<b>DEPLOY SETTINGS TO ALL CLIENTS .....</b>	<b>6</b>
<b>DEPLOY SETTINGS TO SELECTED CLIENTS .....</b>	<b>7</b>
<b>WHITE LIST MAINTENANCE AT CLIENT .....</b>	<b>9</b>
<b>INSTALLED CLIENT LIST .....</b>	<b>10</b>
<b>RECEIVE LOG (SYSLOG) MESSAGES FROM MYUSBONLY CLIENTS .....</b>	<b>11</b>
<b>ALTERNATE WAY TO DEPLOY COMMANDS (WITHOUT ADMIN KIT): .....</b>	<b>13</b>

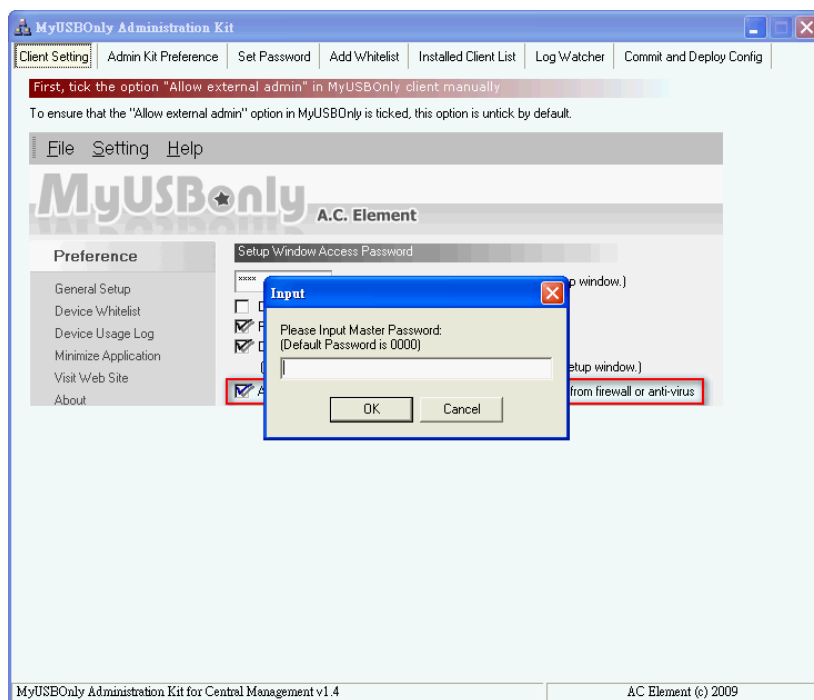
## Download and Install Admin Kit

Download from <http://www.myusbonly.com/dload/AdminKit.exe>

Admin Kit does not require installation. Simply create a new folder, for example, C:\Admin\

Download and save AdminKit.exe to C:\Admin, execute AdminKit.exe to start Admin Kit.

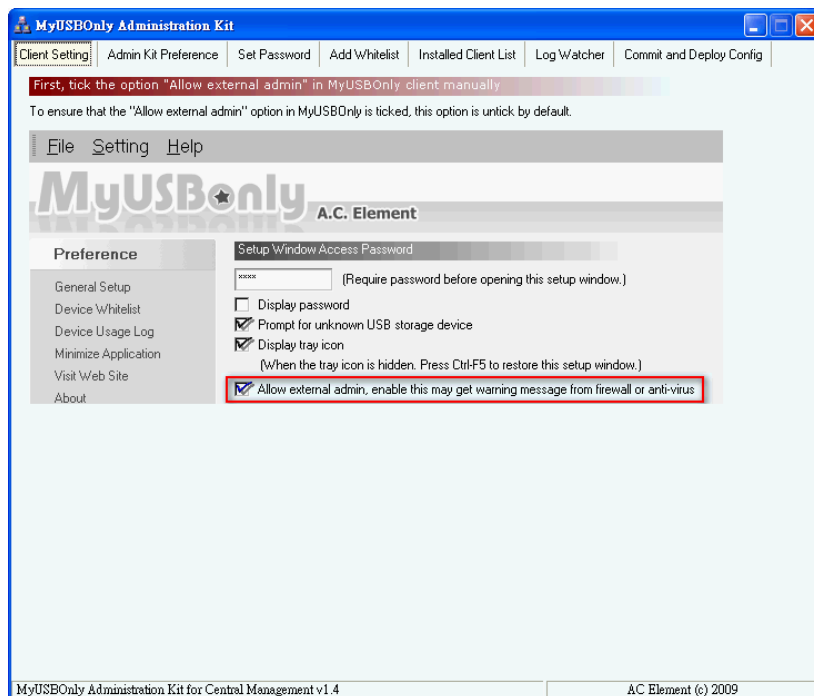
The default password is 0000



## MyUSBOnly Client Setting

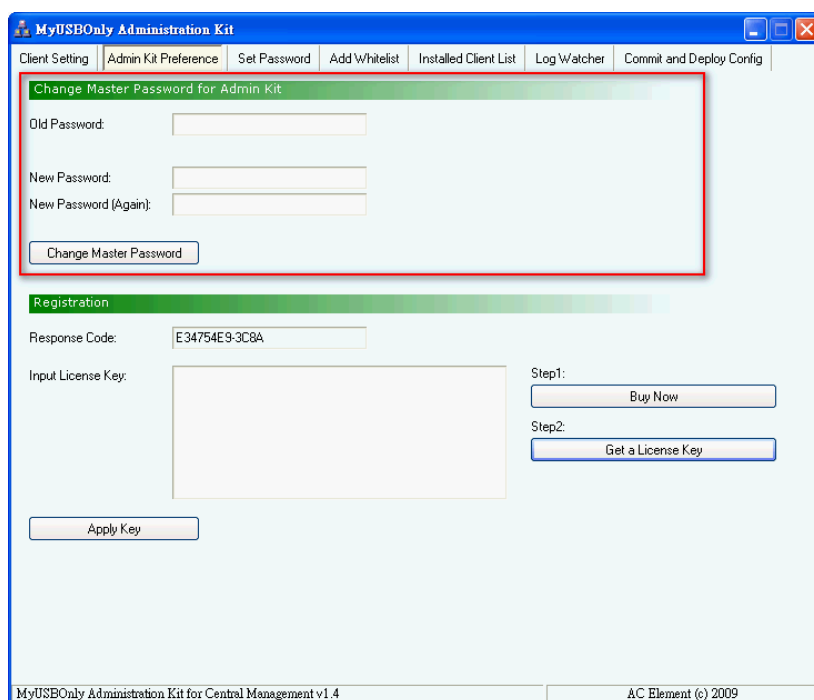
In Client Setting Tab Page, make sure “Allow external admin” option is checked.  
Or make use of Windows Installer Redistribution function (.msi file, msiexe) with parameter to enable this function.

```
msiexec /qb /i myusbonly_setup.msi ENABLE_ADMIN=1 SERIAL_NUMBER="12345-12345"
```



## Setup Password for Admin Kit

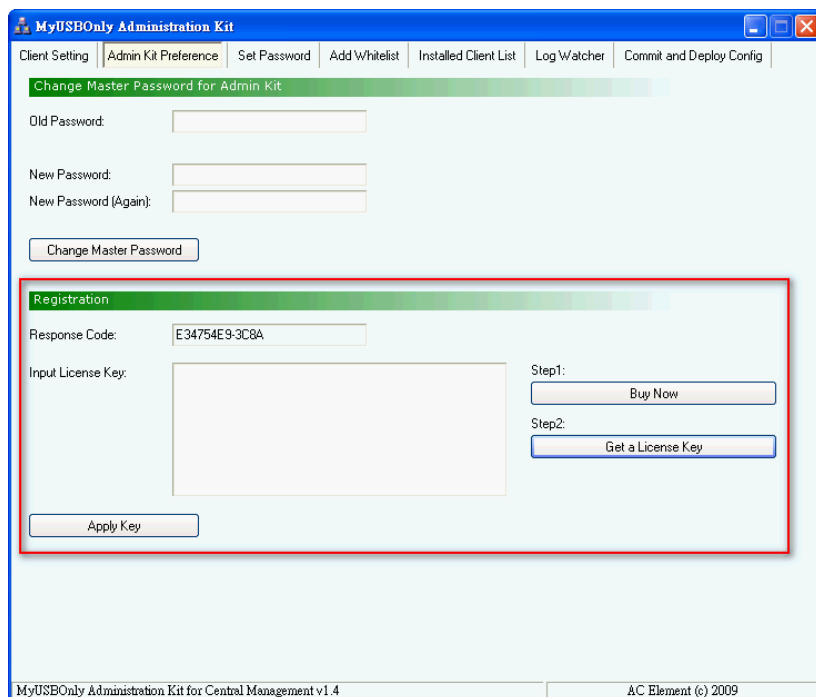
You may change the password for Admin Kit by **Change Master Password** button.



## Register your Admin Kit

To register your Admin Kit, you will need the product Serial Number to acquire the License Key through Internet. Click [Get a License Key](#) to acquire the Key, then input the Key into the screen as below.

If you do not have a purchased copy, click [Buy Now](#) to get your copy through Internet.



The screenshot shows the 'MyUSBOnly Administration Kit' application window. The 'Registration' section is highlighted with a red border. It contains the following fields and buttons:

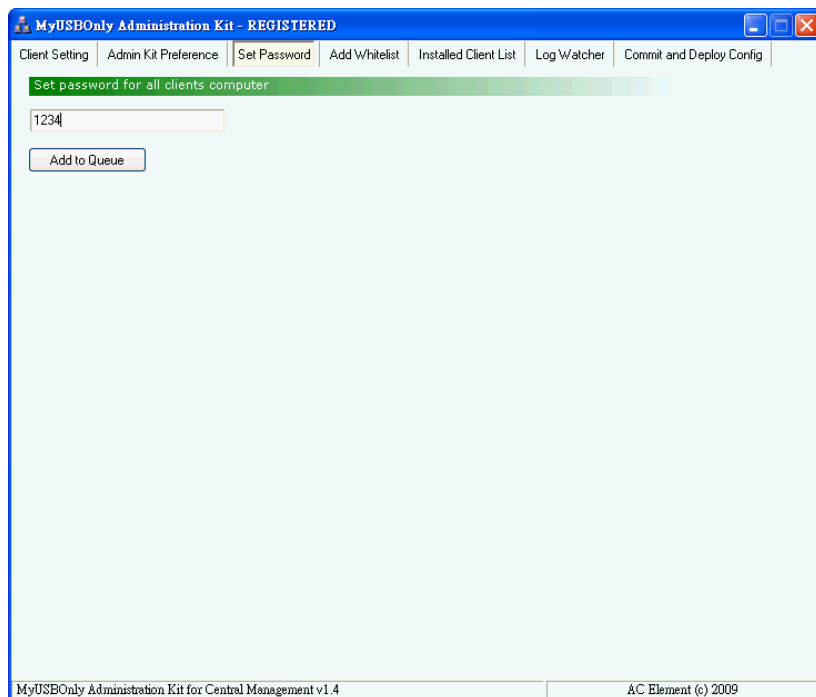
- Response Code:** A text box containing the value 'E34754E9-3C8A'.
- Input License Key:** A large empty text box for entering the license key.
- Step1:** A button labeled 'Buy Now'.
- Step2:** A button labeled 'Get a License Key'.
- Apply Key:** A button at the bottom left of the registration section.

Other visible elements include a menu bar with options like 'Client Setting', 'Admin Kit Preference', 'Set Password', 'Add Whitelist', 'Installed Client List', 'Log Watcher', and 'Commit and Deploy Config'. The status bar at the bottom indicates 'MyUSBOnly Administration Kit for Central Management v1.4' and 'AC Element (c) 2009'.

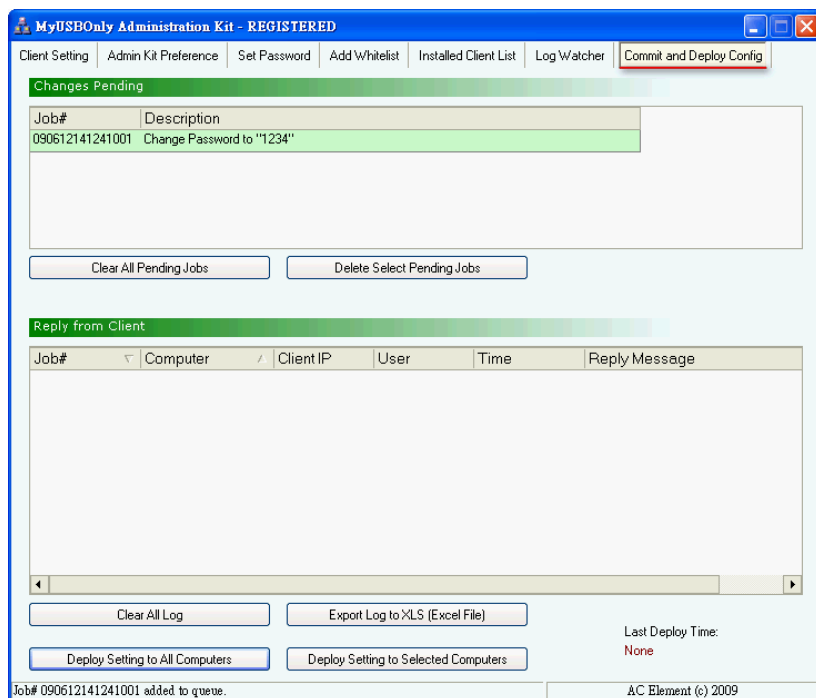
## Modify Client Password from Admin Kit

Admin Kit will save the pending client changes to Job List by **Add to Queue** button, then switch to 'Commit and Deploy Config' tab page. From this page you can deploy the changes in the Job List to all or selected clients.

For example, to change client password, key in the new password as below and click **Add to Queue**

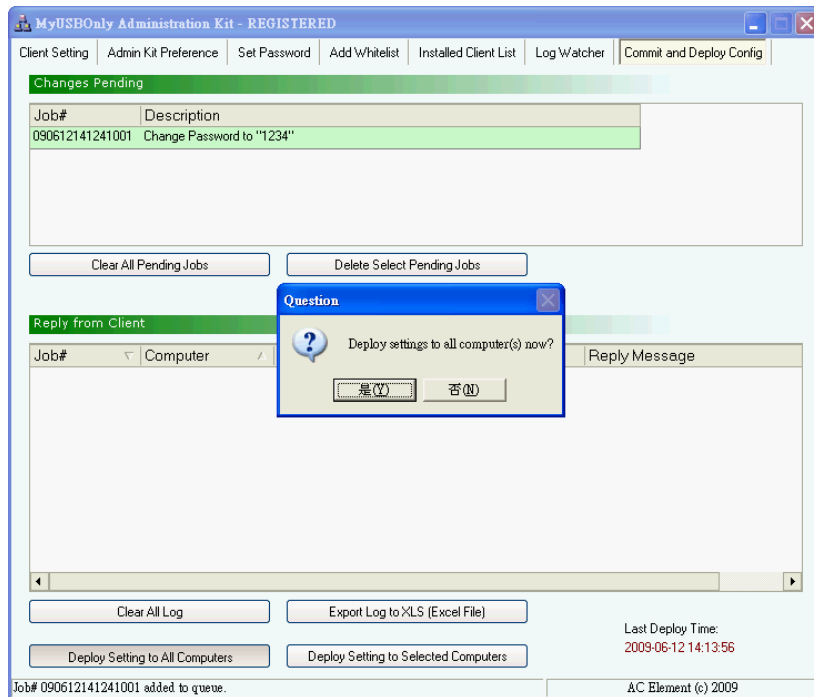


Switch to 'Commit and Deploy Config' tab page; verify the pending changes from the Job List.



## Deploy Settings to All Clients

Click the bottom left button **Deploy Setting to All Computers** to deploy the pending jobs to all clients. Click 'Yes' to confirm your action.

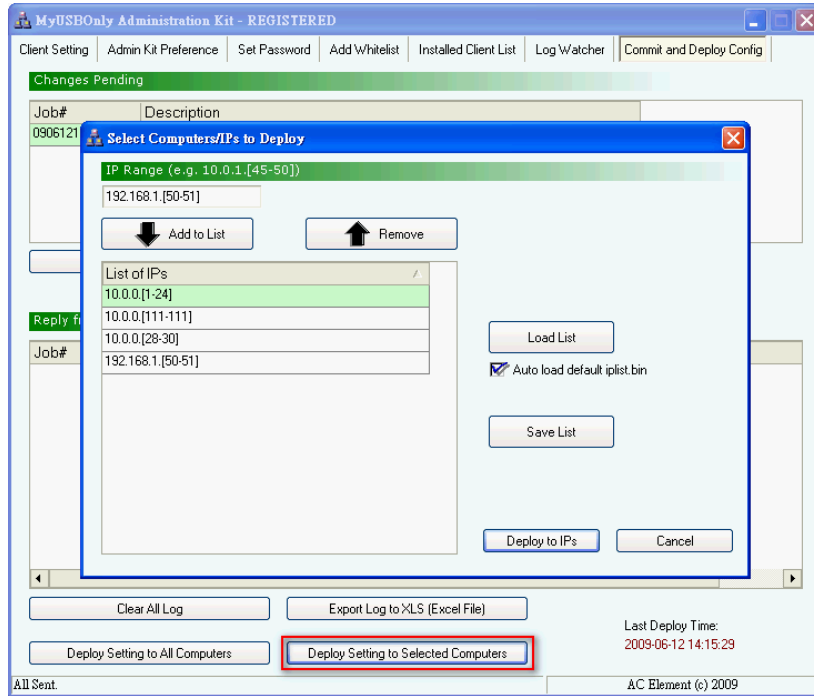


## Deploy Settings to Selected Clients

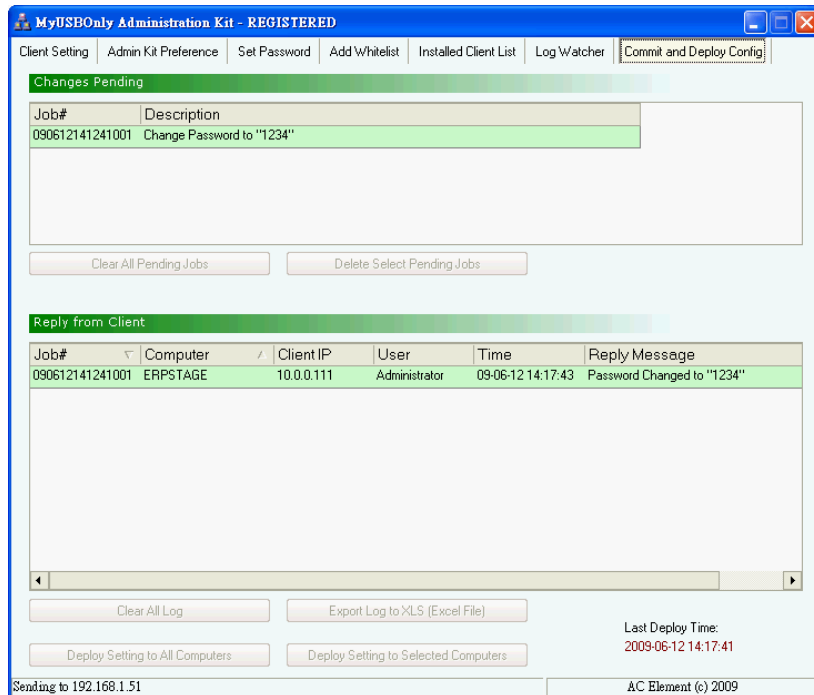
Instead of deploy to all clients, you may selectively deploy the jobs to one or a group of clients. Click the **Deploy Setting to Selected Computers** button and input the IP address list. ( IP format 111.111.111.[111-111] )

Click **Deploy to IPs** button to deploy the job to the clients within the IP list.

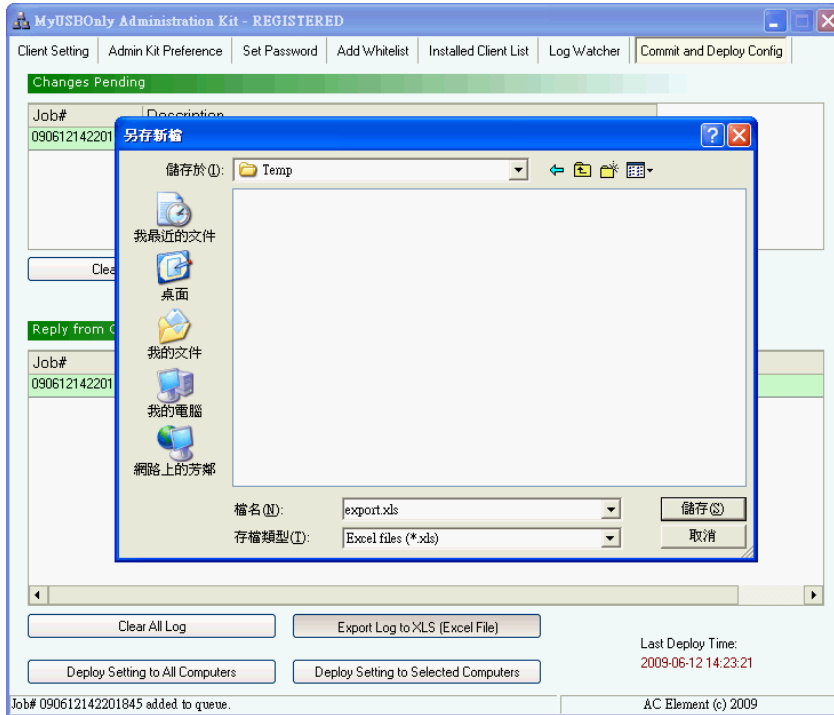
You may save the IP list for future use by clicking the **Save List** button.



The clients will automatically reply the job request with details.



You may export the client reply list to an Excel file for reference. Click the **Export** button and specify the path and filename of the Excel file.





## White List Maintenance at Client

This function will allow you to maintain the client White List. After connect an USB device to one of the USB ports, click **Detect** to scan for USB device and add to new device list.

1. **\*Add\*** Above Items to Client, update the Job List (Queue) , this will add the new scanned device into the White List

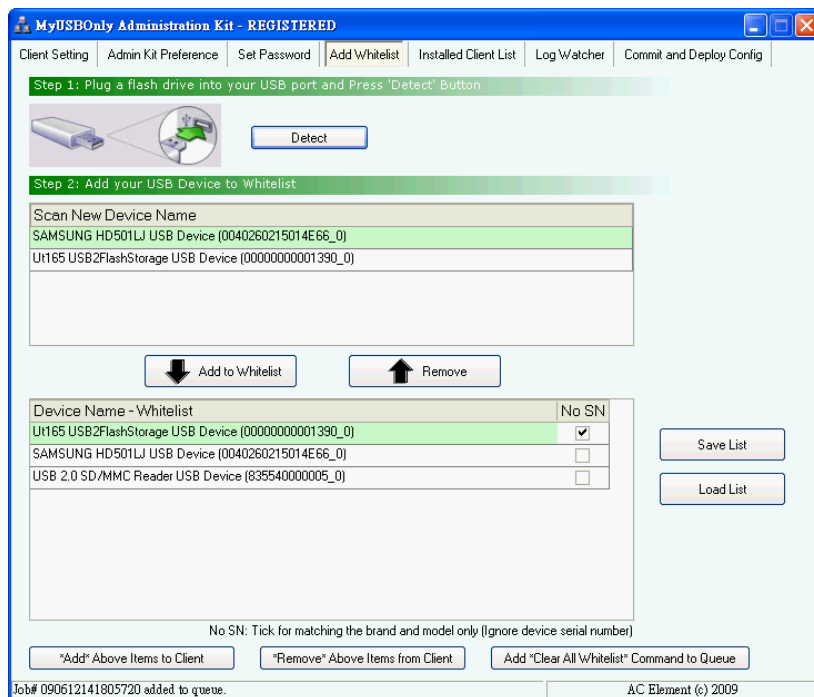
.or.

2. **\*Remove\*** Above Items to Client, update the Job List (Queue) , this will remove the devices (with same model) from the White List.

.or.

3. Add **\*Clear All Whitelist\*** Command to Queue, this will clear the client White List.

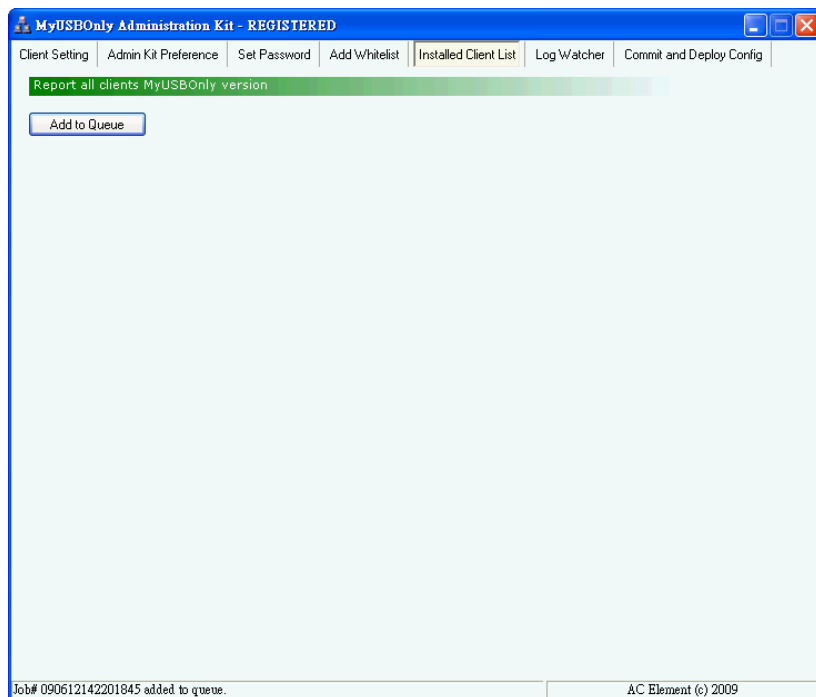
**Caution:** this screen only add new jobs to the Job List (Queue), please go to 'Commit and Deploy Config' tab page, click **Deploy** button to deploy the changes to clients.



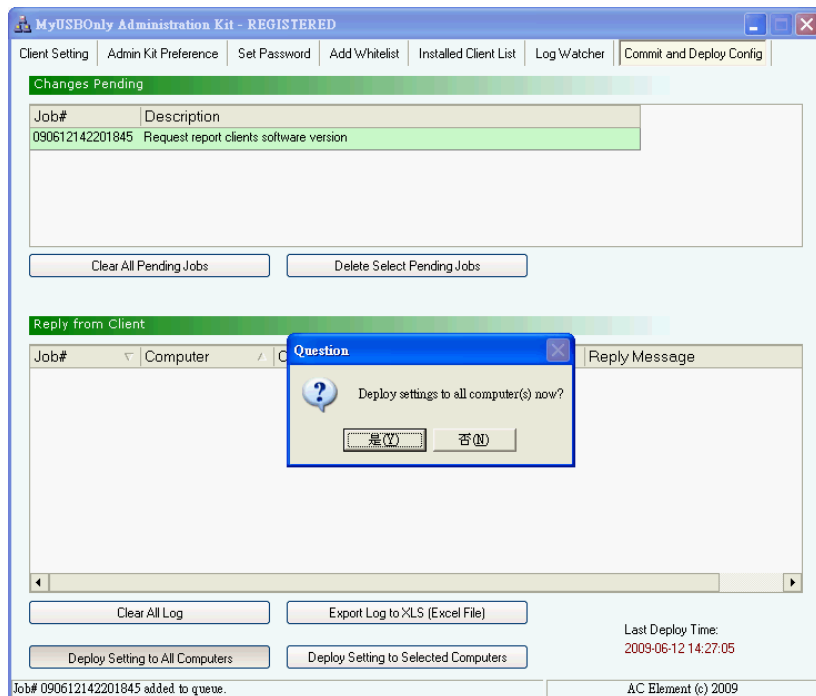
## Installed Client List

This function will allow you to view and verify the version of all installed MyUSBOnly clients.

Click  to add this job into Job List.

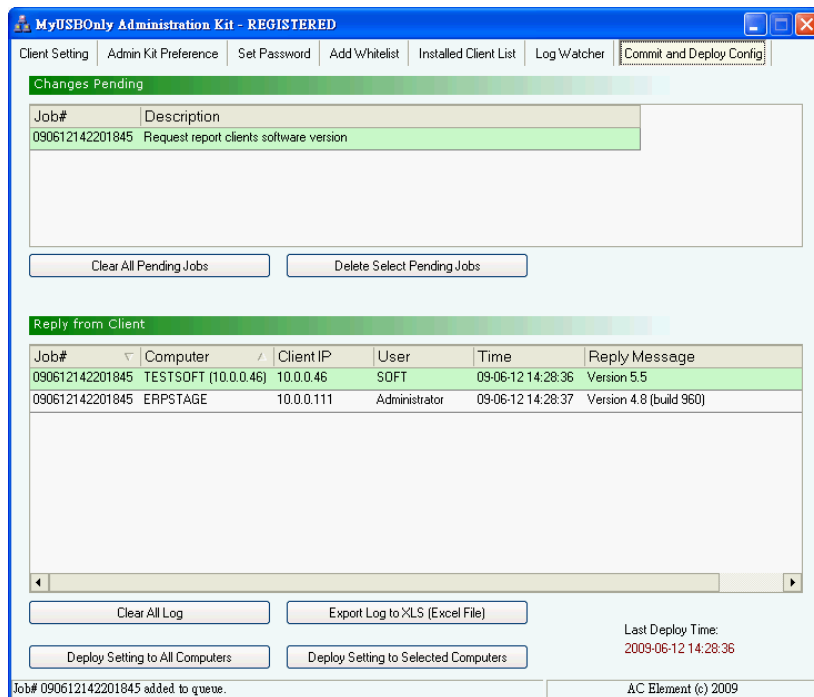


Switch to 'Commit and Deploy Config' tab page and deploy the job.



The clients will automatically reply the job request with details.

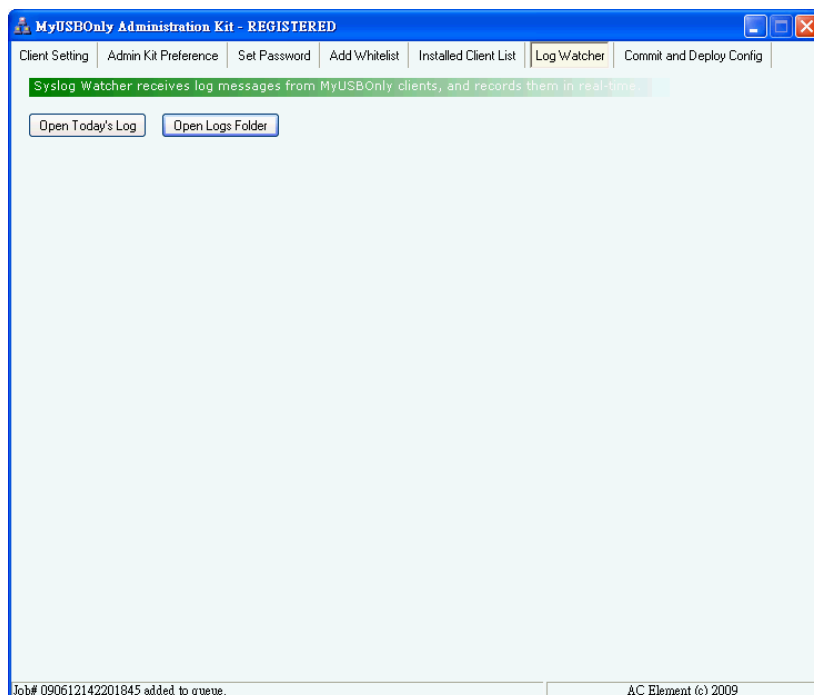
You may export the client reply list to an Excel file for future reference.



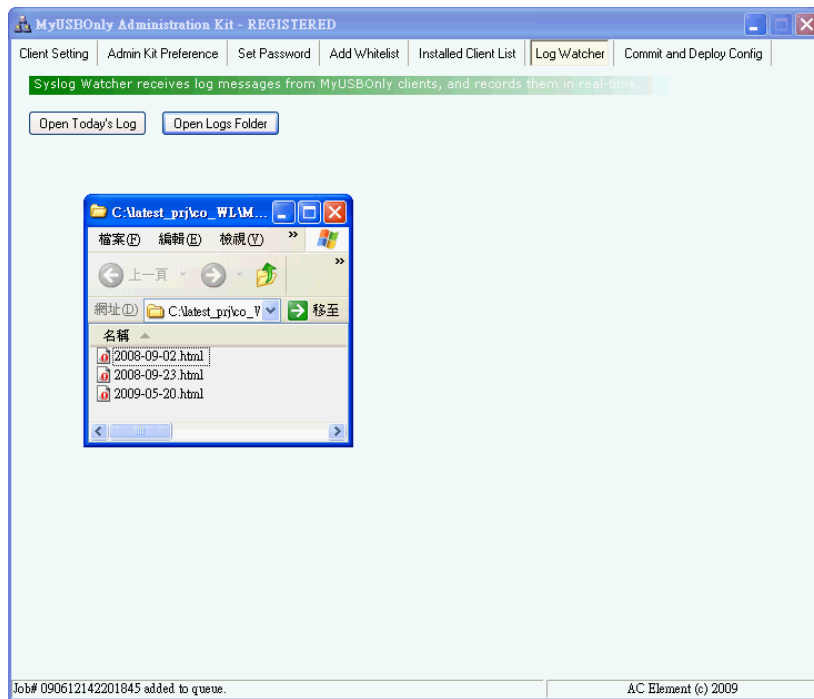
## Receive Log (Syslog) Messages from MyUSBOnly Clients

The Admin Kit comes with a free 'Receive Log (Syslog) Messages from MyUSBOnly Clients' function. Switch to 'Log Watcher' tab page and click [Open Today's Log](#) button. The Syslog details will be displayed in Internet Explorer.

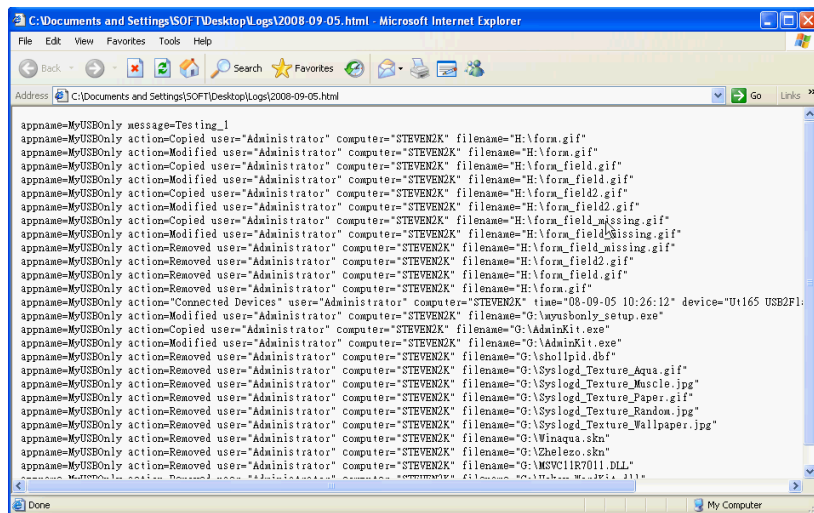
Or click the [Open Logs Folder](#) to open the file folder.



## Screen Sample: File folder which contains daily Syslog information in html format.



## Screen Sample: Syslog details in Internet Explorer



## **Alternate Way to Deploy Commands (without Admin Kit):**

**You may replicate the software setting to other installed clients by following steps.**

Step1 - Change MyUSBOnly setting on one of the workstations.

Step2 - Replicate the setting file: MyUSBOnly.bin

Location of MyUSBOnly.bin for Windows XP:

**C:\Documents and Settings\All Users\Application Data\MyUSBOnly\MyUSBOnly.bin**

Location of MyUSBOnly.bin for Windows Vista:

**C:\ProgramData\MyUSBOnly\MyUSBOnly.bin**

Replicate MyUSBOnly.bin to USB storage device or share folder of Windows Server.

Step3 - Copy MyUSBOnly.bin to client workstations and overwrite the old setting.

Location:

**C:\Program Files\A.C. Element MyUSBOnly\MyUSBOnly.bin**

Step 4 - Create a blank file reload.bin. Copy reload.bin to client workstation.

Location:

**C:\Program Files\A.C. Element MyUSBOnly\reload.bin**

Deploy complete.